



Stanford in the Vale

Welcome to

# **NEIGHBOURHOOD PLANNING**

Please drive carefully

**“Hi there and thanks for joining us.  
We know your time is valuable... so  
on with the show”**



# “Today is mainly about two things”

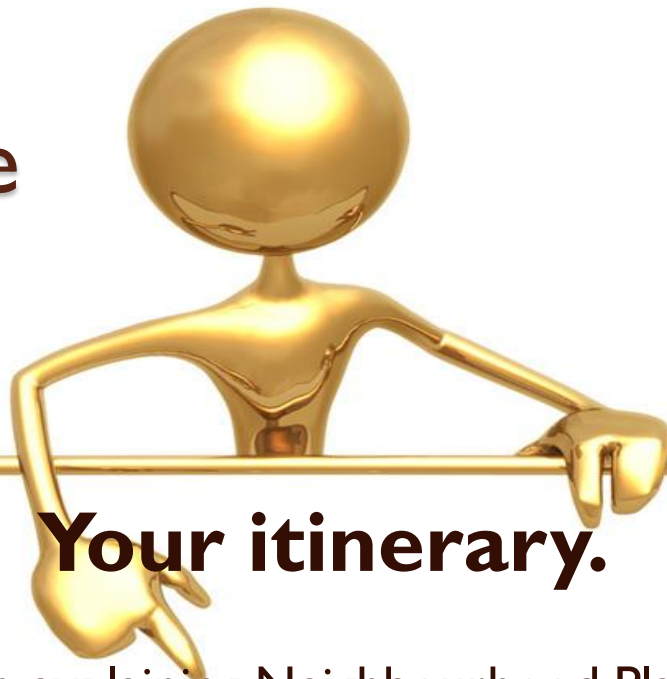
Giving you a chance to  
find out more about  
Neighbourhood  
Planning



Giving you an initial chance to  
**HAVE YOUR SAY**

*(but there will be many other chances)*

“So let’s get started... we’ve divided things into 3 parts”



## Your itinerary.

Part 1

A brief presentation explaining Neighbourhood Planning, summarising the NP process and some draft Objectives for our NP.

Part 2

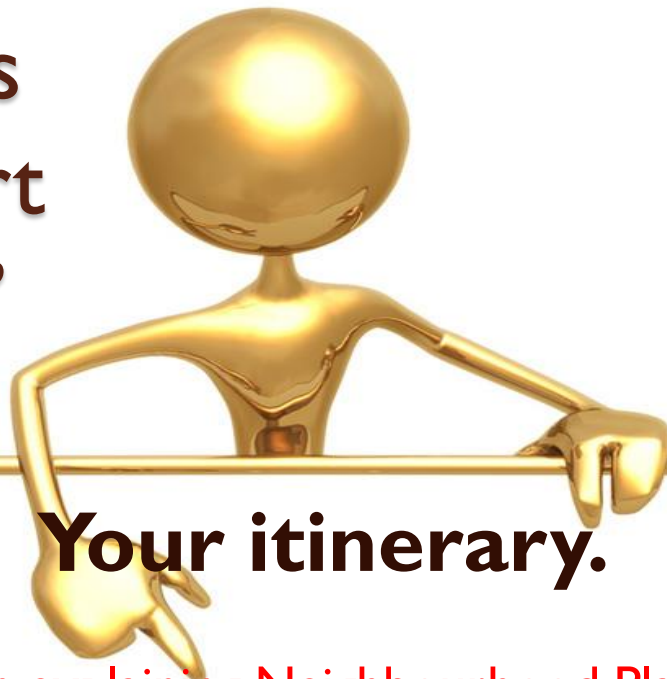
Move on to hear and talk directly with the people working on these draft Objectives to find out more and to give them your views.

Part 3

Move on to take a few minutes to further give us your views:

- Tell us what you most want to keep, change or improve in the Parish
- Fill in a simple questionnaire to tell us what local facilities and services matter most to you and what development scenarios seem most sensible to you

“OK – let’s  
make a start  
on part 1”



## Your itinerary.

Part 1

A brief presentation explaining Neighbourhood Planning, summarising the NP process and some draft Objectives for our NP.

Part 2

Move on to hear and talk directly with the people working on these draft Objectives to find out more and to give them your views.

Part 3

Move on to take a few minutes to further give us your views:

- Write down the things you most want to preserve and change
- Fill in a simple questionnaire to tell us what local facilities and services matter most to you and what development scenarios seem most sensible to you

# Neighbourhood Plans are about development and land use



# So why have a Neighbourhood Plan?

We all want to protect and enhance what is good about our Parish of Stanford in the Vale, improve facilities and services and have a positive influence on future development.

A Neighbourhood Plan (NP) is an important way to do this.

It will carry real weight in future planning matters.

It can help direct where new homes, shops, offices, leisure facilities, schools and other development should be built and what they should look like.

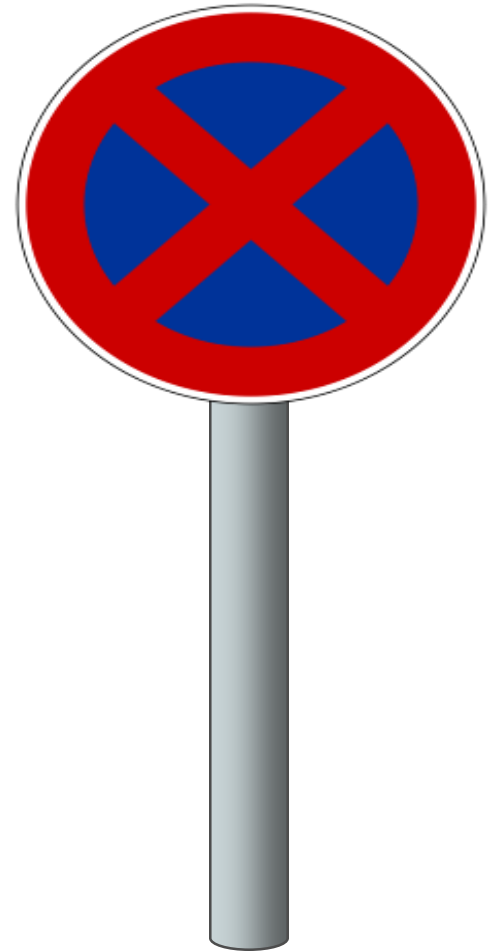


# They are not a way of stopping growth

Must comply with:

- European, National and Local legislation and strategy

*... so can help inform, direct and shape development but not stop it*



# They need to engage the community



Greetings from Winsford 2027



# They need to be based on evidence

**Demographic** – who lives here? current and trends

**Socio-economic** – who works? where? & at what?

**Environmental issues** – flooding, air quality

**Designations** - heritage, landscape, wildlife

**Transport** – services, capacity, usage

**Infrastructure** – capacity, fitness for purpose, need

**Housing stock** - type, tenure, condition, need

**Land uses** – potential development sites



# They are submitted for examination



## Checks the **NP** meets the basic conditions:

- Conformity with EU and UK law
- Conformity with the National Planning Policy Framework and local policy
- Contributes to sustainable development

## Recommends:

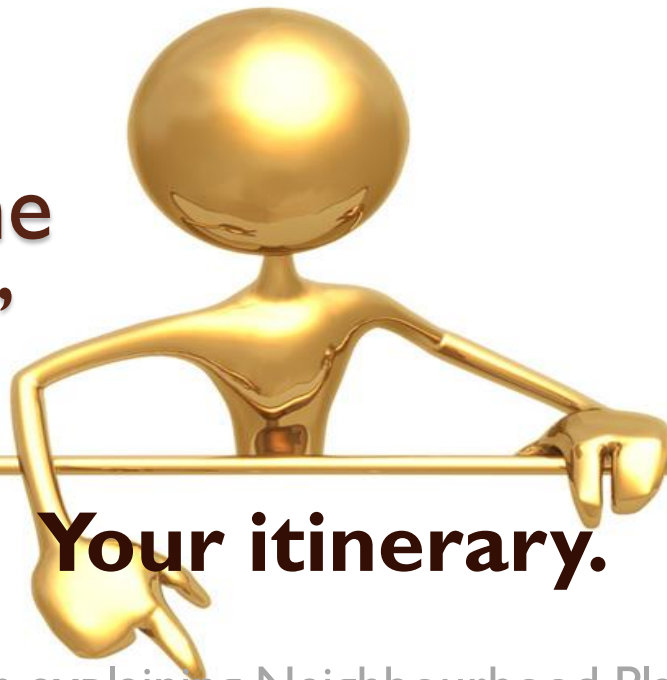
- Whether it's put to local referendum
- Who is included in the vote

# They are subject to a local referendum

- completed and “inspector-approved” plans are referred to a local vote
- plans with more than 50% YES vote are ‘made’ and have a legal status so carry weight in any future planning decisions
- >50% of those who vote – not those who live or work in the area



# “Let’s summarise the NP Process”



## Your itinerary.

Part 1

A brief presentation explaining Neighbourhood Planning, **summarising the NP process** and some draft Objectives for our NP.

Part 2

Move on to hear and talk directly with the people working on these draft Objectives to find out more and to give them your views.

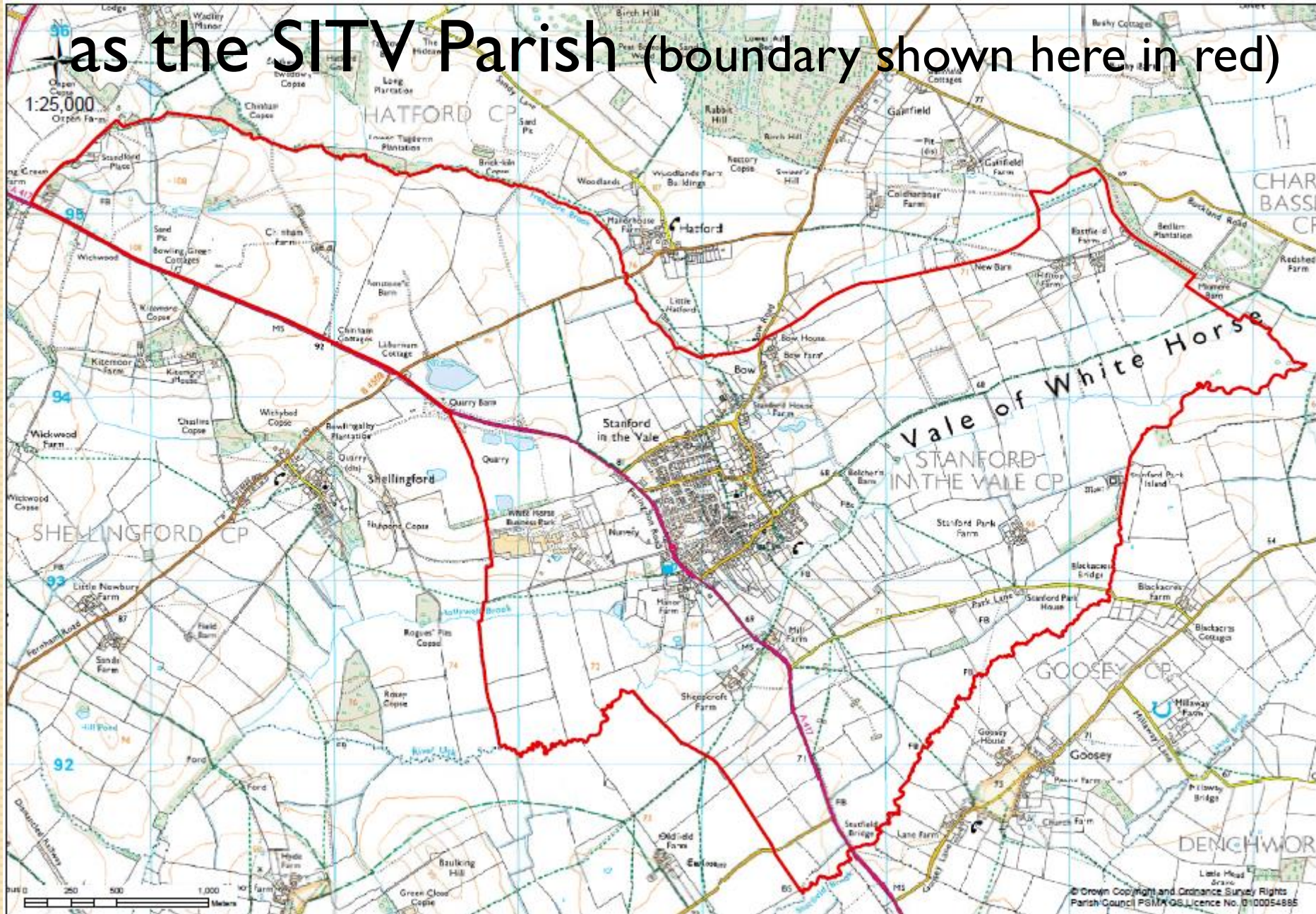
Part 3

Move on to take a few minutes to further give us your views:

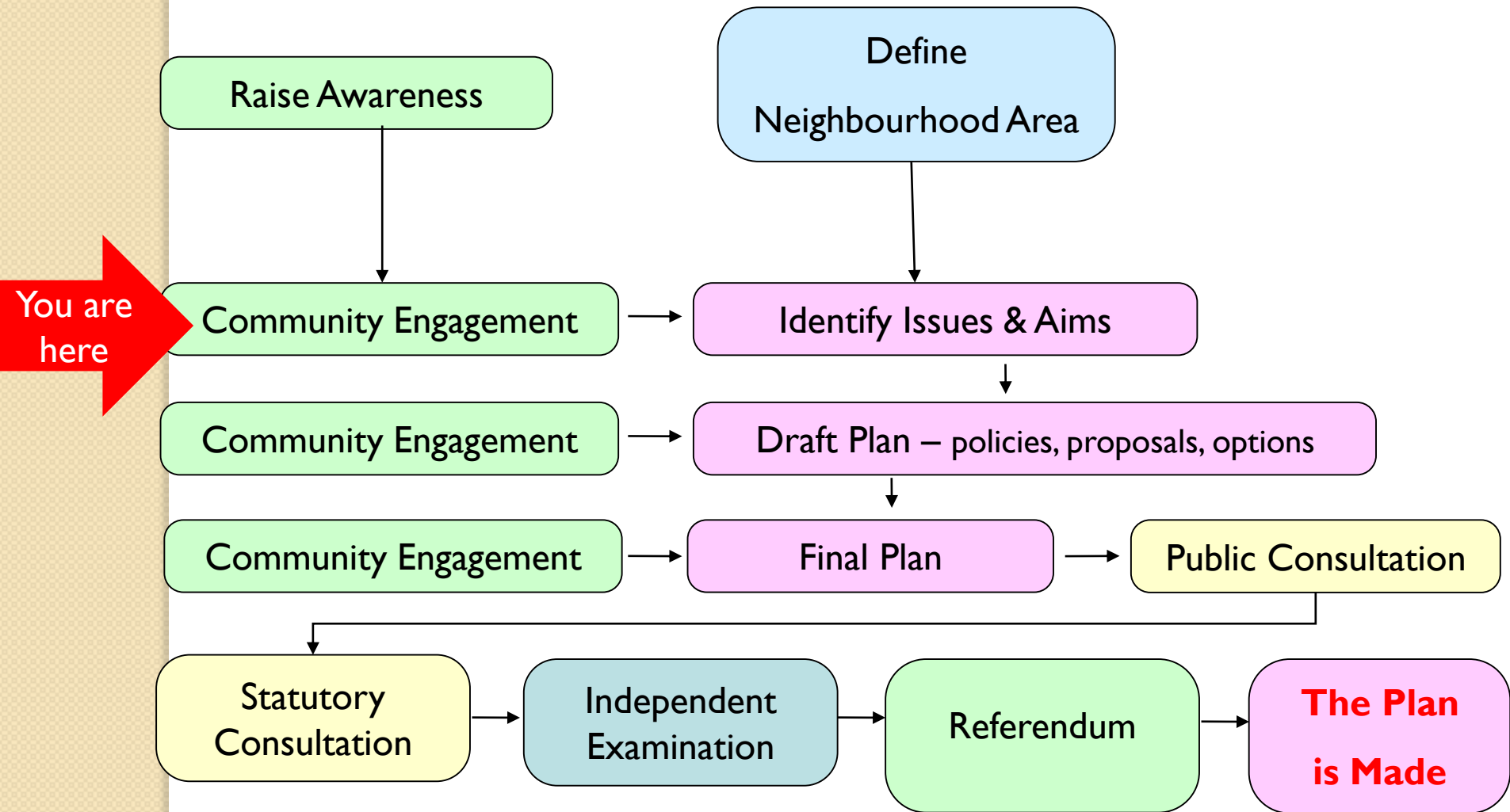
- Write down the things you most want to preserve and change
- Fill in a simple questionnaire to tell us what local facilities and services matter most to you and what development scenarios seem most sensible to you

Our neighbourhood area has been defined

as the SITV Parish (boundary shown here in red)



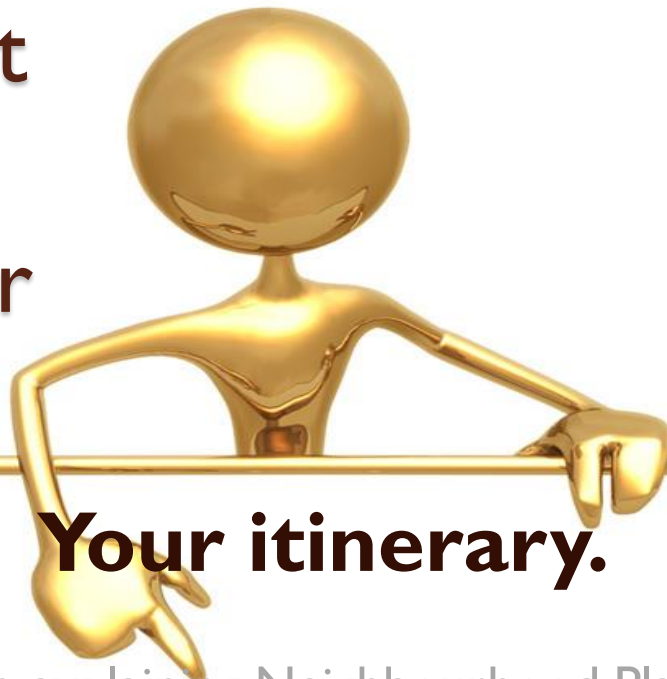
# The NP Process



**There will be many opportunities for Community Engagement along the way allowing you to have your say via events, formal surveys and the website.**



“Let’s look at  
some draft  
objectives for  
our NP”



## Your itinerary.

Part 1

A brief presentation explaining Neighbourhood Planning, summarising the NP process and some **draft Objectives for our NP.**

Part 2

Move on to hear and talk directly with the people working on these draft Objectives to find out more and to give them your views.

Part 3

Move on to take a few minutes to further give us your views:

- Write down the things you most want to preserve and change
- Fill in a simple questionnaire to tell us what local facilities and services matter most to you and what development scenarios seem most sensible to you



## Stanford in the Vale

“We’ve set ourselves a target”

To be one of the best places in  
the south of England  
in which to live, work and play.



“To turn this into reality we’ve started to develop a set of **6 objectives** and within each we are working to identify important **issues** and **aims**. This is where we need more help from you to help identify the things that are important to you”



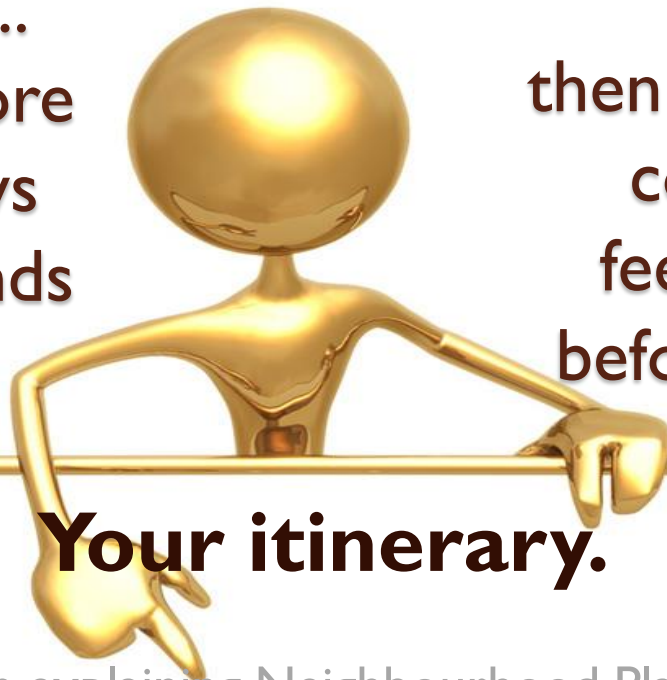
# 6 Objectives for our built environment and land use

#	Objective
1	<b>Support key demographic, housing, business, leisure, education and social trends to meet the existing and future needs of our community</b> (including an aging population, first time buyers, start-up businesses, education and sports facilities).
2	<b>Protect, preserve and enhance important buildings, features and areas in both the historic and natural environment</b> (including Conservation Areas, greens, amenity spaces, footpaths, walls, woodlands and other habitats).
3	<b>Actively seek prioritised infrastructure improvements</b> (including to drainage/sewage, parking/transport, telecommunications, lighting).
4	<b>Preserve and enhance valuable existing facilities and services and add new ones of benefit to the community</b> (including retail & business, leisure and education).
5	<b>All future development sites must be appropriate, sustainable and of benefit to our community</b> (not just land owners and developers).
6	<b>Support sensitive, limited and proportionate development incorporating good quality and design</b> (encouraging eco-friendly and renewable development approaches as part of this).

Do you agree with these objectives and are we working on the right aims and issues under each one? **Now it's your turn to HAVE YOUR SAY...**

“So onto Part 2...  
Please find out more  
and air your views  
by visiting the stands  
in the hall...

then Part 3 – please  
complete the  
feedback forms  
before you leave ”



## **Your itinerary.**

Part 1

A brief presentation explaining Neighbourhood Planning, summarising the NP process and some draft Objectives for our NP.

Part 2

Move on to hear and talk directly with the people working on these draft Objectives to find out more and to give them your views.

Part 3

Move on again to take a few minutes to further give us your views:

- Write down the things you most want to preserve and change
- Fill in a simple questionnaire to tell us what local facilities and services matter most to you and what development scenarios seem most sensible to you

# END OF PRESENTATION

“Thanks for taking time to watch. Now look around the displays, ask questions, hear more and have your say. We hope to hear from you again soon.”

Visit

[www.sitvnp.com](http://www.sitvnp.com)

for more info, to hear the latest progress and to give your further views anytime.

